

Movement that inspires

At Kia, we believe movement inspires ideas. Great ideas come to you when you're on the move. Whether you're walking, traveling on a train or driving. It's why we create the spaces and the time you need to bring ideas to life.

※ All information, illustrations and specifications are accurate at the time of printing and are subject to change without notice. The models and specifications shown in this brochure may vary from those available in your market. Contact your local Kia dealer for current information and full warranty details including terms and conditions.

2202-JNS-ME-LHD



The all-new Sportage



Broaden your horizons, for endless inspiration.

The all-new Kia Sportage. Bold and contemporary design.
Built with the latest innovation. So you feel more confident when you're
on the move. No matter where life takes you.

For those who keep moving. For those who keep seeking.
Inspiration is never out of reach.



Confidence to move.

With advanced ADAS safety technologies, expanded visibility.
You feel more confident and connected to the world than ever before.



Bold and sleek.
The ultimate urban SUV.

Strong shouldered and muscular.
Bold and innovative grille-headlight combination.
We push the boundaries of a conventional SUV.





Space innovation. Intelligent and immersive.

Everything is designed around the driver. From the immersive curved display to the intelligent, easy-to-use controls. Digital keys, Wi-Fi, wireless charging, and mobile-paired audio. Connectivity is more seamless than ever. So you can have all the right technologies, in all the right places.



Comfort for everyone.

The all-new Sportage offers plenty of headroom and legroom for everyone. Seats are firm and supportive. Rear-seat passengers even have their own heat-level controls.



Expand your viewing experience.

With an open view of the world outside, feel more connected to the world around you. Even when inside your car. Controls are integrated into simple and self-contained displays. So you can focus on exploring your surroundings, uninterrupted.



Panoramic sunroof

The broad panoramic sunroof adds a feeling of light and space to the interior. With one touch, it will let in sunlight, starlight, and breezes to help everyone stay cool and refreshed.



Panoramic curved display

A curved, unified HD display combines driving functions and the center infotainment and navigation screens in one manageable frame. Simple graphics and touch commands give the driver top priority.

Convenience is in the details.

Versatile seats that can be adapted to your changing needs. Whether that means cooling off, having a place to hang your coat, or making extra space for things you suddenly realize you need to bring along.

The all-new Sportage caters to all your detailed needs.



Ventilated and heated front seats

Enjoy a more comfortable ride no matter what the weather is like outside. Control the front-seat ventilation fans and heat levels from the climate panel.



Remote 2nd-row seatback folding

Pull the release lever on the cargo-space wall to fold the 60/40 split rear seatback down. It saves you the inconvenience of leaning or climbing in when handling long or bulky items.



Headrest hanger / USB ports on seatbacks

The backs of the front headrests include built-in, shape-preserving coat hangers. Rear seat passengers will find convenient USB-C charging ports in the seatbacks ahead of them.

Simple and intuitive design for climate and audio controls.
Convenient space to stow your phone and other devices.



Wireless charging tray
The charging pad in the dash, in front of the center console, lets you quickly charge compatible portable phones, wirelessly.



Infotainment/climate switchable controller
Infotainment and climate functions share the same LCD softkey keyboard. Press the fan icon button to transform the controls on the right to climate. Press the arrow icon button to switch them to infotainment.



Android Auto / Apple Carplay
The infotainment and audio systems offer integration with mobile devices via Android Auto or Apple Carplay.



Electronic Parking Brake (EPB)
Press the console EPB button when parking. EPB disengages in Drive or Reverse when you press the accelerator.



Variable cupholders & Multiple tray
The center console cupholders disassemble when not in use, so tablets and other flat items can fit in the same space.

Driving technology that protects.

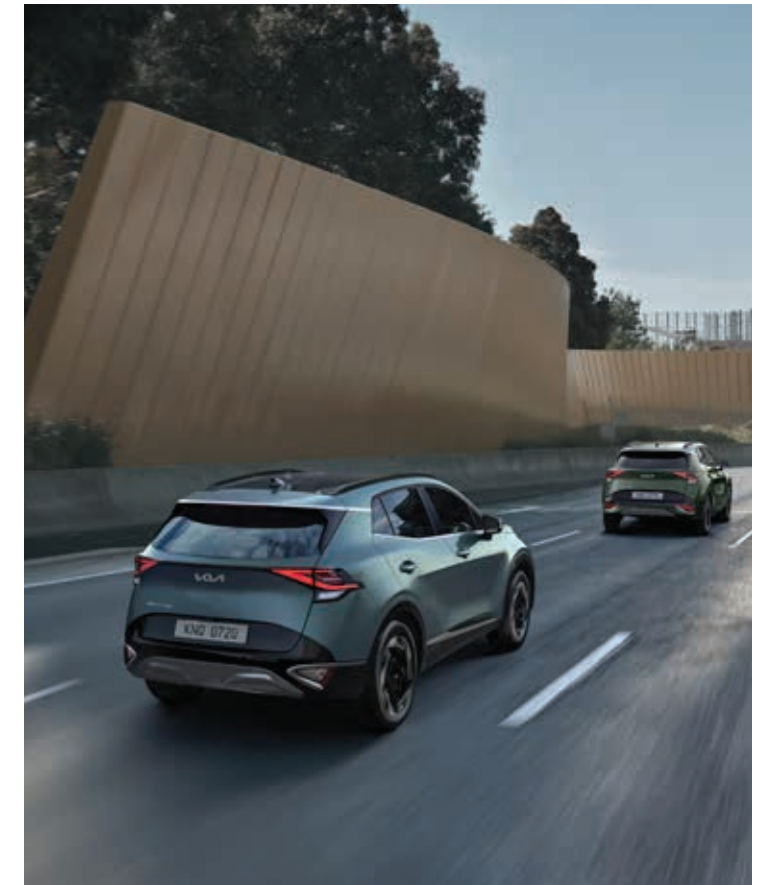
Observing, sensing, and stepping in whenever you need assistance: Kia's Drive Wise applies the latest Advanced Driver Assistance System (ADAS) technologies to help keep you alert, safe and in control. Ensuring the ultimate experience in occupant and pedestrian safety.

Forward Collision-Avoidance Assist (FCA) Using a front view camera and front radar(optional), FCA can detect a vehicle, a pedestrian, or a cyclist ahead. It can warn you, or even brake automatically. FCA also works when crossing or turning left at an intersection.



Lane Following Assist (LFA)

To help you center the vehicle in the lane while driving, LFA uses the front view camera to help guide the steering, based on lane markings or the car ahead.



Smart Cruise Control (SCC)

Smart Cruise Control helps you maintain distance from the vehicle ahead, and drive at the speed you set. The vehicle stops automatically, and can resume automatically if the pause is brief.

One can never be too cautious.

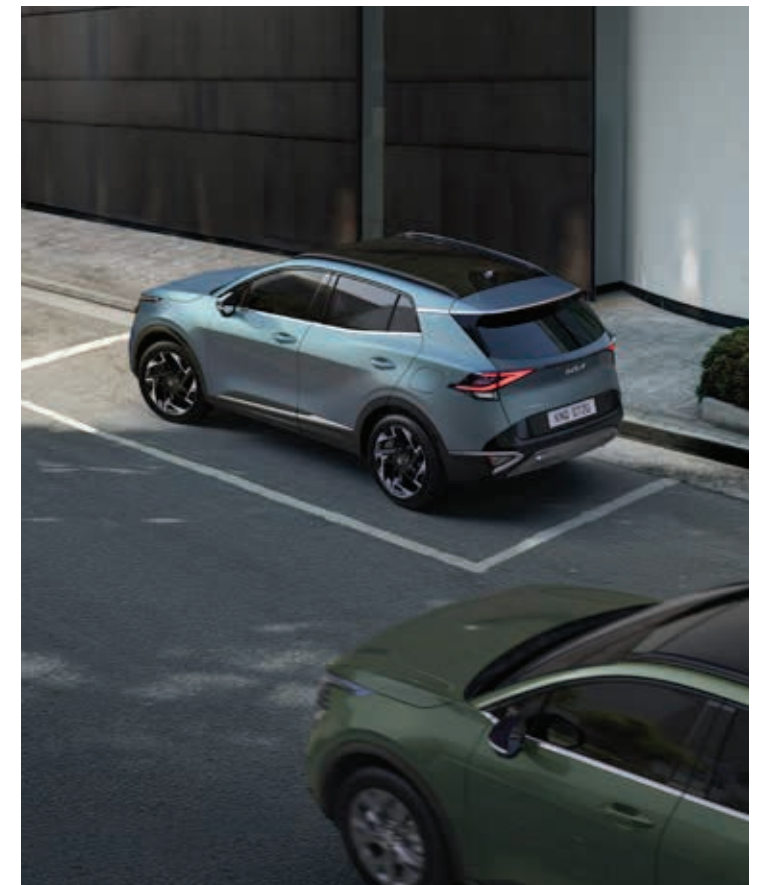
ADAS technology offers an extra pair of eyes to help you in any situation. When you are on the move, while you are parking, when you are backing out, and even when you are stepping out of your vehicle. Feel protected.

Blind-Spot Collision Warning (BCW) Using radar technology, BCW warns you if it detects a vehicle approaching from behind or in the adjacent lanes of travel. The system employs visual alerts on the side view mirror to inform the driver when it detects a vehicle in the blind spot.



Rear Cross-Traffic Collision Warning (RCCW)

As you reverse, if there is a risk of collision with a vehicle approaching from the left or right side, RCCW warns you.



Safe Exit Warning (SEW)

If you are stopped and someone is about to open a door that faces traffic, SEW will detect a vehicle approaching from the rear, and automatically warn your occupants not to exit that way.



Agile, responsive performance.

Driving surfaces change unexpectedly when you're on the move. The Sportage responds to these changes quickly. Using the latest sensing and stability technology. Drive Mode Select lets you adjust the performance to your needs, while keeping it balanced and smooth.



Shift By Wire (SBW) / Drive Mode Select (DMS)

Shift By Wire offers precise, immediate shifting, while the Drive Mode Select dial, beside the driver's seat, offers quick, logical changes.



Each engine is built to be both efficient and durable. Paired with a transmission calibrated for smooth interaction. To enhance your driving experience.

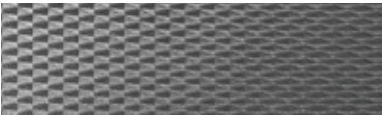
GT-line

Smartstream G2.0	Smartstream G1.6 T-GDi	Smartstream D1.6
Max. power 156 ps	Max. power 180 ps	Max. power 136 ps
Max. torque 19.6 kg·m	Max. torque 27.0 kg·m	Max. torque 32.6 kg·m

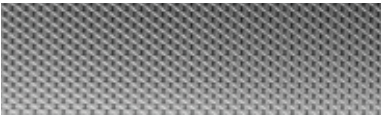
Choose your interior

Each selection sets a different mood. Choose an interior color, materials, and finish that fit your preference.

Crash Pad Garnish



Metal paint



Technical pattern



Metalic wood hair line



Black Interior



Black / Iced coffee beige Interior



Leather + Suede



Cloth



Leather + Suede



Artificial leather + Cloth



Artificial leather + Cloth



Cloth



Cloth



Cloth



GT-Line



Artificial leather + Suede



Artificial leather + Suede

Choose your exterior

Exterior Body Colors



Deluxe white pearl (HW2)



Casa white (WD)



Sparkling silver (KCS)
(Not available on GT-Line)



Lunar silver (CSS)



Penta metal (H8G)



Pearl black (1K)



Infra red (AA9)



Pacific blue (B3L)



Machined bronze (M6Y)
(Not available on GT-Line)



Splash lemon (G2Y)



Orange fusion (RNG)



Experience green (EXG)



Yuka steel gray (USG)
(Not available on GT-Line)

Wheels



17" Alloy wheel



18" Alloy wheel
(A-Type)



18" Alloy wheel
(B-Type)

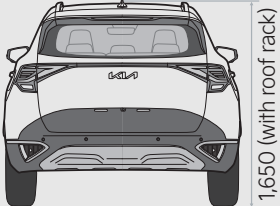
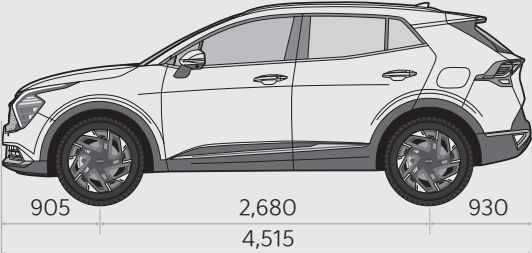
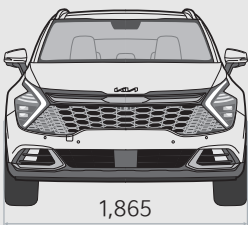


19" Alloy wheel

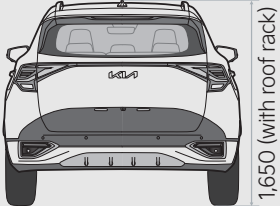
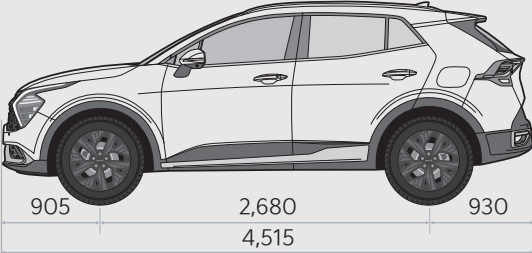
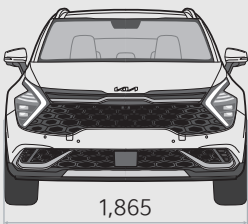
Dimensions (mm)

Head room (1st/2nd row)	1,008 / 998
Leg room (1st/2nd row)	1,052 / 996
Shoulder room (1st/2nd row)	1,461 / 1,414
Hip room (1st/2nd row)	1,392 / 1,366
Minimum ground clearance	170
Fuel tank (liters)	54

EX



GT-line



Choose your own distinctive style.

Additional detailed features can also be customized.



Full LED headlamps



LED headlamps with Bulb T/SIG



Hidden rear wiper



8-inch display audio



3.8-inch audio



Supervision cluster (4.2-inch color TFT LCD)



LED rear lamps



Bulb rear lamps with LED tail lamps



Metal pedals



Dual-Zone Full Auto Temperature Control



Manual temperature control



Integrated Memory System (IMS)



LED fog lamps



LED repeater integrated outside mirrors



Metal door scuff



Auto gear shift



Manual gear shift



Paddle shift levers

When you move,
inspiration is never out of reach.

The all-new Sportage.

