

The All-New SELTOS

Badass. Forever

Advanced Driver Assistance System (ADAS) – Level 2

Quick Reference Guide

Important Information

Never disassemble the detecting sensor / sensor assembly or cause any damage to it. (Front /Corner- Radar; Windshield ADAS Camera)

If the detecting sensor has been replaced or repaired, have the vehicle inspected by a professional workshop.

Kia recommends to visit an authorized Kia dealer / service partner.

Never install any accessories or stickers Over the ADAS Camera and Front /Corner- Radar

Pay extreme caution to keep the front view camera dry.

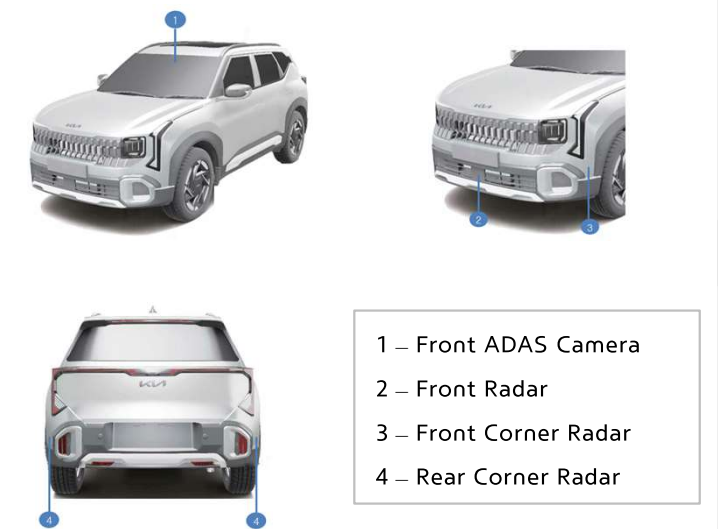
Never place any reflective objects (for example white paper, mirror) over the dashboard.

Do not apply license plate frame or objects, such as a bumper sticker, film or a bumper guard, near the Front or Corner radar

Always keep the radar area clean and free of dirt and debris. Use only a soft cloth to wash the vehicle

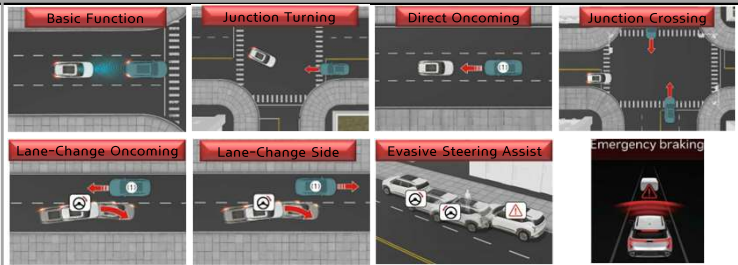
Do not spray pressurized water directly on the sensor or Radar cover

ADAS Camera & Radar Locations in Car:



*For more detail, Please refer owners Manual Chapter-9 (Driver Assistance System)

Forward Collision-Avoidance Assist (FCA)



FCA can detect a vehicle, a motorcyclist, pedestrian, or cyclist ahead on the road, may warn you of a possible collision with a warning message, a warning sound and may assist with braking.

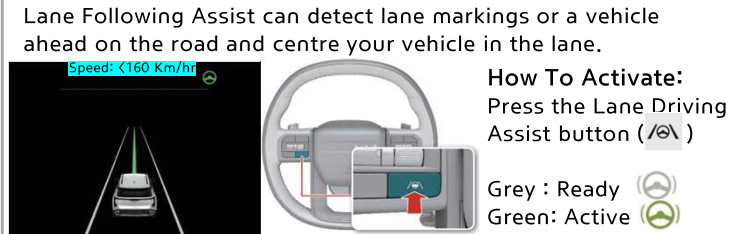
How To Activate:
Setup ► Vehicle ► Driver Assistance ► Driving Safety
► Forward safety/Forward cross-traffic safety/Forward/Side safety
* FCA system will consider previous settings.
[Refer Owners Manual for more information Chapter 9](#)

Lane Keeping Assist (LKA)



How To Activate:
Setup ► Vehicle ► Driver Assistance ► Driving Safety ► Lane Safety
Or Press the Lane Driving Assist button () more than 2 seconds
[Refer Owners Manual for more information Chapter 9](#)

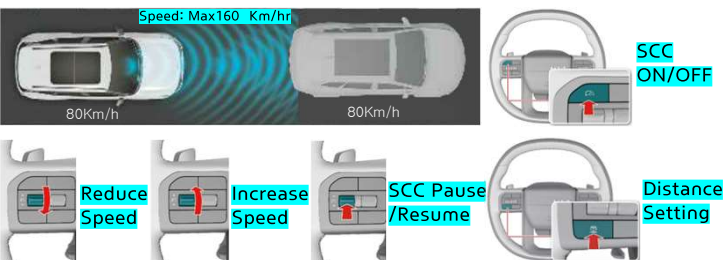
Lane Follow Assist (LFA)



How To Activate:
Press the Lane Driving Assist button ()
Grey : Ready ()
Green: Active ()
[Refer Owners Manual for more information Chapter 9](#)

Smart Cruise Control (SCC)

Smart Cruise Control can detect a vehicle ahead and help you maintain the appropriate following distance from it at the set speed without depressing accelerator or brake.



How to Activate:

Press the Driving Assist button to turn Smart Cruise Control ON.

[Refer Owners Manual for more information Chapter 9](#)

Navigation-based Smart Cruise Control (NSCC)

NSCC helps maintain safe speed by using information from the navigation system when driving on highways whilst Smart Cruise Control is operating.



How to Activate:

Setup ► Vehicle ► Driver Assistance ► Driving Convenience ► Auto Motorway Speed Change

Operating condition: (Below all conditions)

SCC is ON and speed is higher than recommended safe speed.

[Refer Owners Manual for more information Chapter 9](#)

Highway Driving Assist - 2 (HDA-2)

HDA keeps you safe on highways by controlling speed, distance, and lane position.

Highway Lane Change Assist helps change lane in the direction of your turn signal when it determines it is safe.



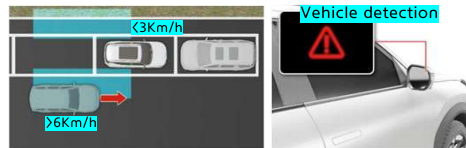
How to Activate:

Setup ► Vehicle ► Driver Assistance ► Driving Convenience ► HDA / Lane Change Assist

[Refer Owners Manual for more information Chapter 9](#)

Safe Exit Warning (SEW)

SEW help you avoid a collision using a warning message and warning sound if it detects a vehicle approaching the rear corner of your vehicle when passenger opens a door.



Exiting vehicle:

Warning light on the outside mirror blinks, warning message on cluster, and an audible warning sound

How to Activate:

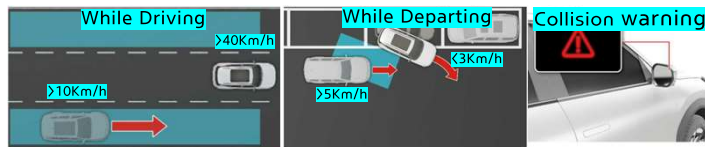
Setup ► Vehicle ► Driver Assistance ► Driving Safety

► Safe exit

[Refer Owners Manual for more information Chapter 9](#)

Blind-spot Collision-avoidance Assist (BCA)

BCA can detect approaching vehicles in your blind spots, warn you of a possible collision and assist with braking if there is a collision risk.



How to Activate:

Setup ► Vehicle ► Driver Assistance ► Driving Safety

► Blind-Spot Safety

Collision-avoidance assist



Rear Cross-traffic Collision-avoidance Assist (RCCA)

RCCA detects vehicles approaching the rear of your vehicle from the left or right whilst reversing and uses a warning message and sound to warn you of a possible collision and assist with braking to help you avoid a collision.



How to Activate:

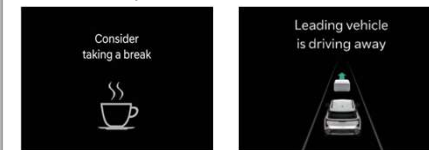
Setup ► Vehicle ► Driver Assistance ► Parking Safety ►

Rear Cross-traffic safety

[Refer Owners Manual for more information Chapter 9](#)

Driver Attention Warning (DAW)

DAW monitors your driving pattern. When your attention is below a certain level, DAW recommends a break to help with safe driving and alert you when a detected vehicle ahead departs from a stop.



How to Activate:

Setup ► Vehicle ► Driver Assistance ► Driver Attention Warning

[Refer Owners Manual for more information Chapter 9](#)

ADAS Function Limitations

ADAS Systems may not operate properly, or it may operate unexpectedly under the following circumstances:

- The detecting sensor or the surrounding are contaminated or damaged
- The temperature around the front view camera is high or low due to the external environment
- Driving in heavy rain or snow, or thick fog, smoke, shadow
- The pedestrian or cyclist is wearing clothing or equipment that makes it difficult to detect as a pedestrian or cyclist
- There is a group of pedestrians, cyclists or a large crowd
- Driving on curved road, uphill, downhill, inclined road
- Improper lane marking, lane marking covered with snow, dirt, etc.
- Driving above the specified speed conditions and at high RPM
- ADAS system will not detect animals, potholes, barricade etc
- When another vehicle or pedestrian suddenly cuts in your path
- Additional fitment & Stickers on Bumpers/Steering/windshield
- The vehicle in front suddenly changes lane / suddenly reduces speed
- You are on a roundabout and the vehicle in front is not detected
- Driving through a tollgate, construction area, unpaved road, partial paved road, uneven road, speed bumps, etc.
- NSCC & HDA is available only on controlled access road of certain highways/ motorways.
- Navigation is not working, real-time GPS data or map information error, road information in the navigation is not updated, etc.

[Refer Owners Manual for more information Chapter 9](#)

Disclaimer: Advance Driver Assistance System (ADAS) is not a substitute for human eye and driver vigilance. It is an assist feature that enhances driving experience and safety. Effectiveness of ADAS may vary based on actual situation and all objects around vehicle may not be detected. The driver shall remain responsible for safe, vigilant and attentive driving.