

The New CARENS EV

Advanced Driver Assistance System (ADAS) – Level 2

Quick Reference Guide

Important Information

Never disassemble the detecting sensor / sensor assembly or cause any damage to it. (Front / Rear Radar / Windshield ADAS Camera)

If the detecting sensor has been replaced or repaired, have the vehicle inspected by a professional workshop.

Kia recommends to visit an authorized Kia dealer / service partner.

Never install any accessories or stickers Over the ADAS Camera and Front / Rear Radar

Pay extreme caution to keep the front view camera dry.

Never place any reflective objects (for example, white paper, mirror) over the dashboard.

Do not apply license plate frame or objects, such as a bumper sticker, film or a bumper guard, near the Front radar cover.

Always keep the front radar and cover clean and free of dirt and debris. Use only a soft cloth to wash the vehicle

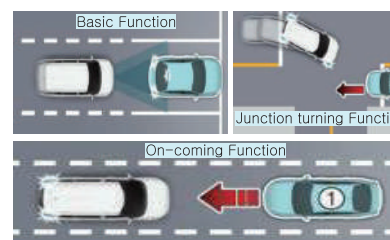
Do not spray pressurized water directly on the sensor or Radar cover

ADAS Camera & Radar Locations in Car:



*For more detail, Please refer owners Manual Chapter-6 (Driver Assistance System)

Forward Collision-Avoidance Assist (FCA)



Emergency Braking:

	Moving Vehicles	Stationary Vehicles
Weak braking power	10~200 km/h (6~124 mph)	
Strong braking power	10~130 km/h (6~80 mph)	10~75 km/h (6~47 mph)

For Pedestrian or cyclist:

Vehicle Speed: 10~65 km/hr

* for more details refer owners manual

Forward Collision-Avoidance Assist help to detect and monitor the vehicle/Pedestrian/cyclist ahead/Oncoming (Vehicle) in the roadway and Warn the driver and apply emergency braking.

How to Activate:

The FCA can be turned ON/OFF through infotainment screen.

*FCA system will consider previous settings.

[Refer Owners Manual for more information Chapter 7](#)



Lane Keeping Assist (LKA)

Lane Keeping Assist is designed to warn the driver if the vehicle leaves the lane without using the turn signal. LKA will auto steer to help prevent the vehicle from departing the lane.



How to Activate :

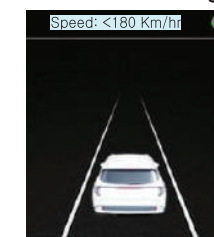
Press & hold the Lane Driving Assist button (LDA) to turn on/off Lane Keeping Assist.

If LKA is ON, the indicator (LKA) will be displayed on the cluster.

[Refer Owners Manual for more information Chapter 7](#)

Lane Follow Assist (LFA)

Lane Follow Assist is a driver convenience function which assist the steering to keep the vehicle in center of the lane.



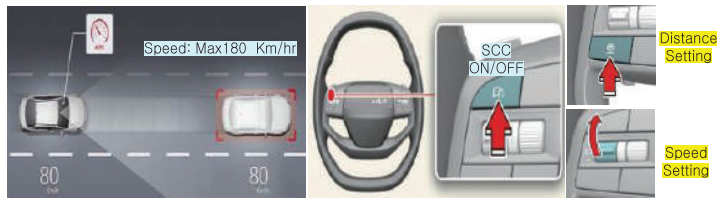
How to Activate :

Short Press Lane driving assist Button on steering to turn ON/OFF LFA The white or green (LFA) indicator light will illuminate on the cluster
White: Ready (LFA) / Green: Active (LFA)

[Refer Owners Manual for more information Chapter 7](#)

Smart Cruise Control (SCC)

Smart Cruise Control allows you to maintain set speed and distance detecting the vehicle ahead without depressing the accelerator or brake pedal.



How to Activate :

Press Driving Assist button on the steering to turn ON/OFF SCC
The speed and distance can be set using the button on steering
[Refer Owners Manual for more information Chapter 7](#)

Rear Cross Traffic Collision Avoidance Assist (RCCA)

Rear Cross Traffic Collision Avoidance Assist is a parking safety function that helps in avoiding collision with vehicle approaching from right/left side while reversing through Warning and Braking



How to Activate :

The RCCA can be turned ON/OFF through infotainment screen.
[Refer Owners Manual for more information Chapter 7](#)

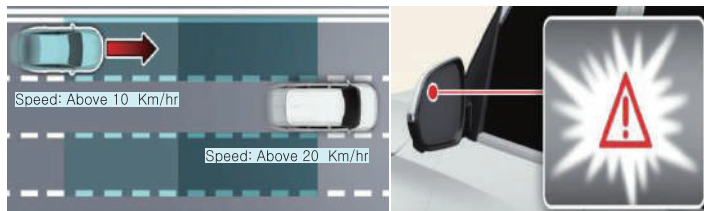
ADAS Function Limitations:

ADAS Systems may not operate properly, or it may operate Unexpectedly under the following circumstances :

- The detecting sensor or the surrounding are contaminated or damaged
- The temperature around the front view camera is high or low due to the external environment
- Driving in heavy rain or snow, or thick fog, smoke, shadow
- The pedestrian or cyclist is wearing clothing or equipment that makes it difficult to detect as a pedestrian or cyclist
- There is a group of pedestrians, cyclists or a large crowd
- Driving on curved road, uphill, downhill, inclined road
- Improper lane marking, lane marking covered with snow, dirt, etc.
- Driving above the specified speed conditions and at high RPM
- ADAS system will not detect animals, potholes, barricade etc.
- When another vehicle or pedestrian suddenly cuts in your path
- Additional fitment & Stickers on Bumpers/Steering/ windshield
- The vehicle in front suddenly changes lane / suddenly reduces speed
- You are on a roundabout and the vehicle in front is not detected
- Driving through a tollgate, construction area, unpaved road,
- Partial paved road, uneven road, speed bumps, etc.

Blind Spot Collision Warning (BCW)

The BCW will alert the driver with a warning light in ORVM / Cluster / Heads up Display (if equipped) and audible warning if a possible collision with approaching Vehicles from rear in the driver's blind spot area is detected.



*Blind spot Collision Avoidance will not assist Driver with Steering & Braking.
[Refer Owners Manual for more information Chapter 7](#)

Safety Exit Warning (SEW)

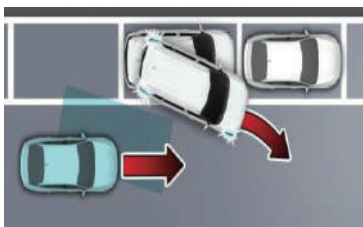


when an approaching vehicle from the rear area is detected as soon as a passenger opens a door, SEW will warn the driver with a warning message & audible warning to help prevent a collision.

How to Activate :

The SEW can be turned ON/OFF through Infotainment screen
[Refer Owners Manual for more information Chapter 7](#)

BCA - Parallel Exit



BCA Parallel Exit function will warn and assist with braking if a vehicle approach from rear side lane

Your vehicle speed: <3Km/hr
Host Vehicle Speed: >5Km/hr

How to Activate :

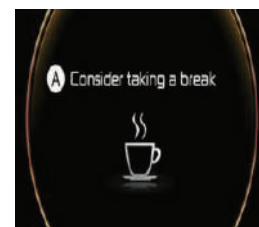
The BCA can be turned ON/OFF through infotainment screen.

*Brake control will end after 2 seconds when the vehicle is stopped by emergency braking.

[Refer Owners Manual for more information Chapter 7](#)

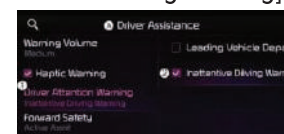
Driver Attention Warning (DAW)

DAW will recommend a break when the driver's attention level falls below a certain level by analyzing the driving pattern & driving time while the vehicle is driven



How to Activate :

The DAW can be turned ON/OFF through driver Infotainment Screen
[Inattentive Driving Warning]



[Refer Owners Manual for more information Chapter 7](#)

For More ADAS related limitation refer Owners Manual Chapter 7 – Driver Assistance System (Individual Systems)



Disclaimer: Advance Driver Assistance System (ADAS) is not a substitute for human eye and driver vigilance. It is an assist feature that enhances driving experience and safety. Effectiveness of ADAS may vary based on actual situation and all objects around vehicle may not be detected. The driver shall remain responsible for safe, vigilant and attentive driving.