

Do vehicles also have a widget feature?

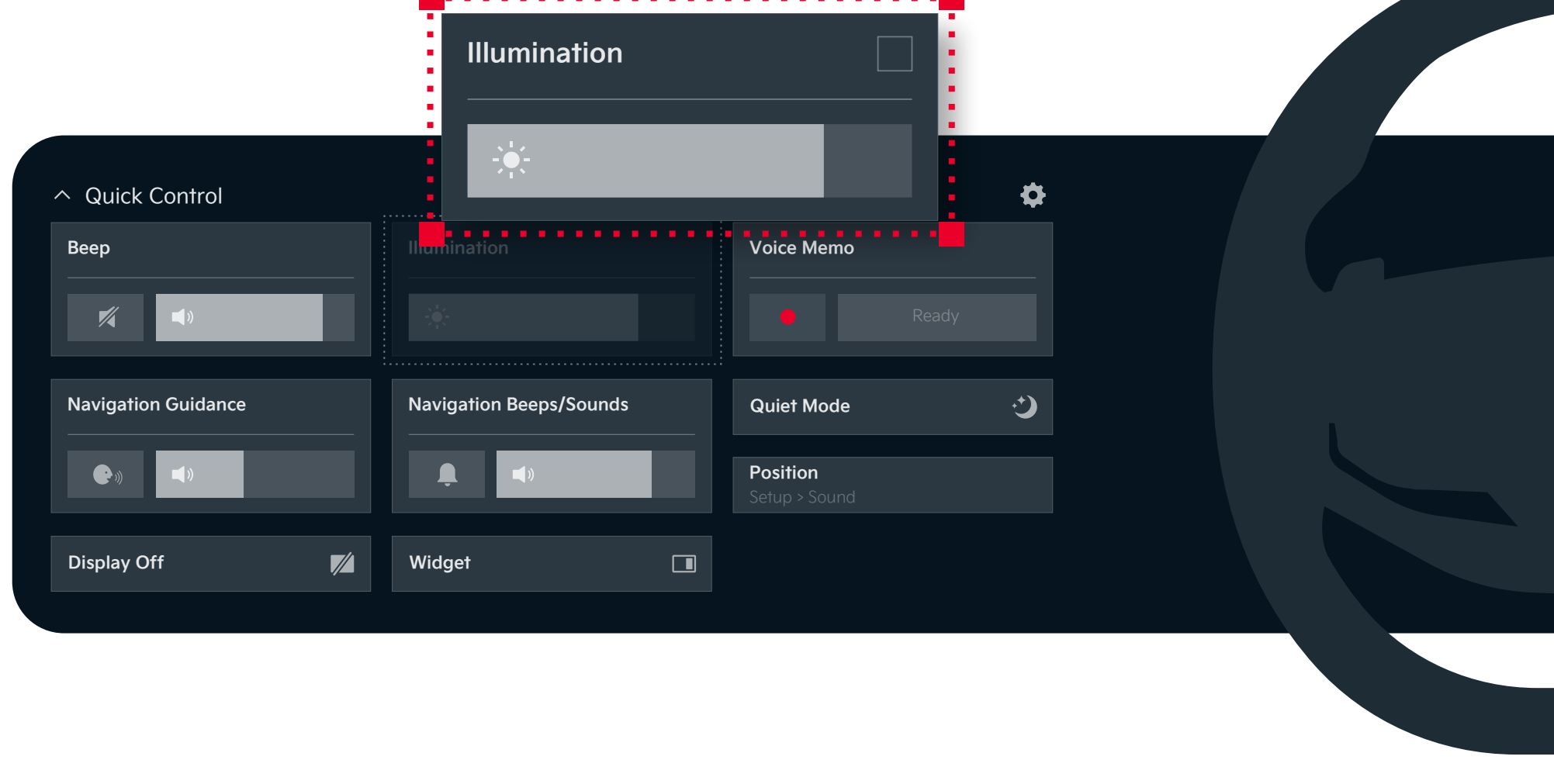
Quick Control,
the start of smart vehicle control.



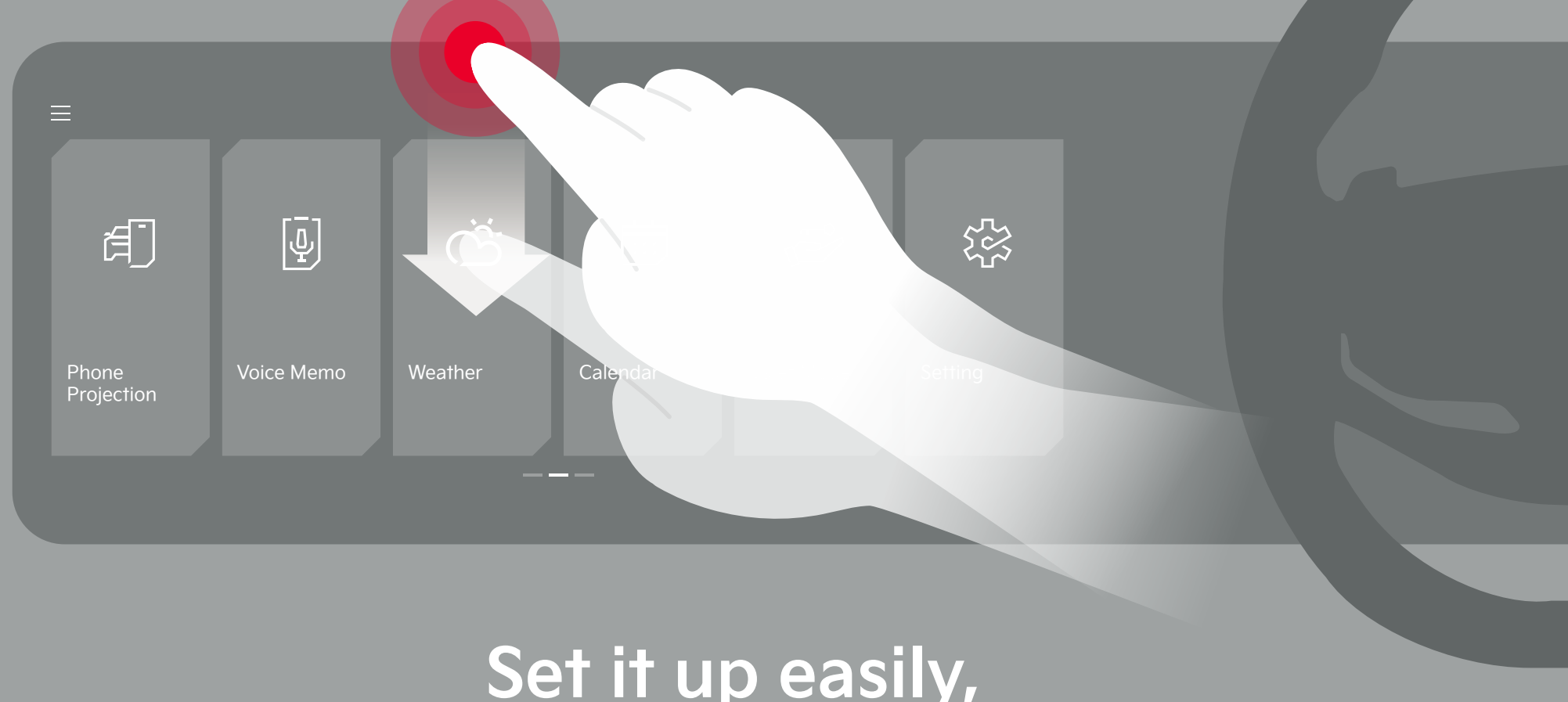
KIA
Movement that inspires

Of course!

Quick Control allows the driver to organise frequently used features on a single screen for easier management. It makes things quick and easy, from setting up to selecting and deactivating features.




Swipe once and use Quick Control.

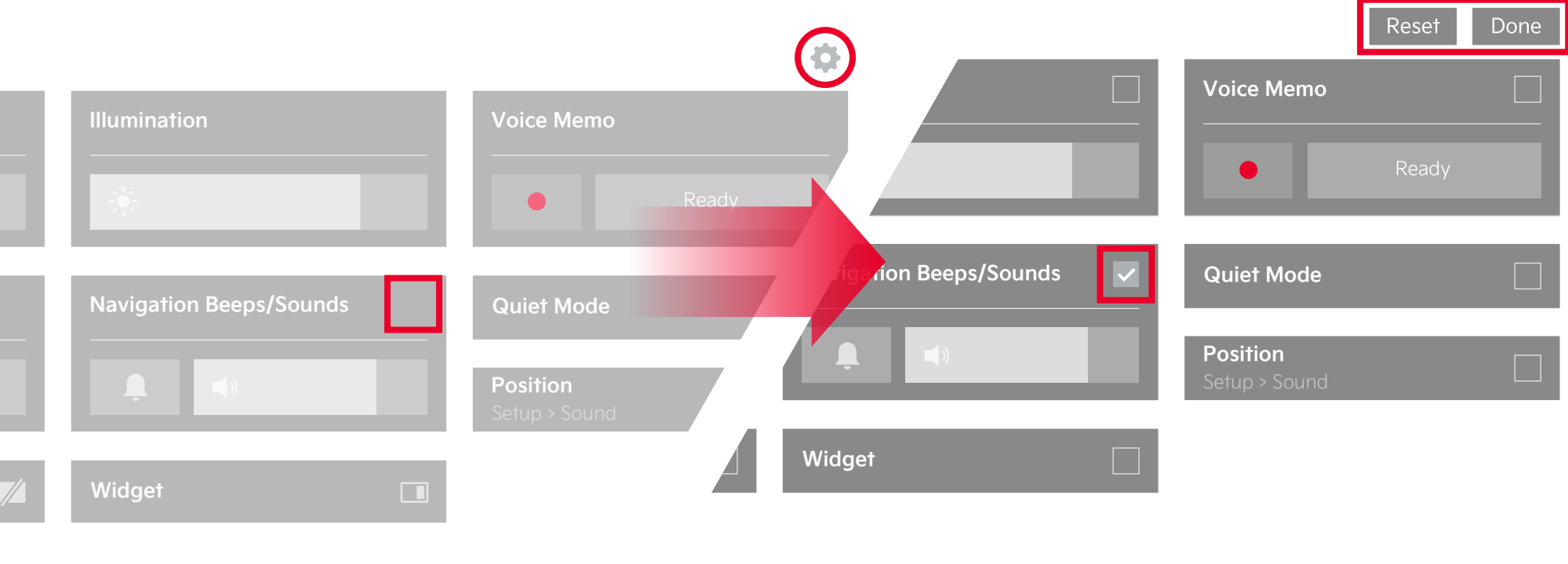


Set it up easily,
like a smartphone.

How To


Pull down the centre bar at the top to directly adjust and change the settings. Press the icon  or swipe the screen upward to go back to the previous screen.

With a simple touch, edit Quick Control.

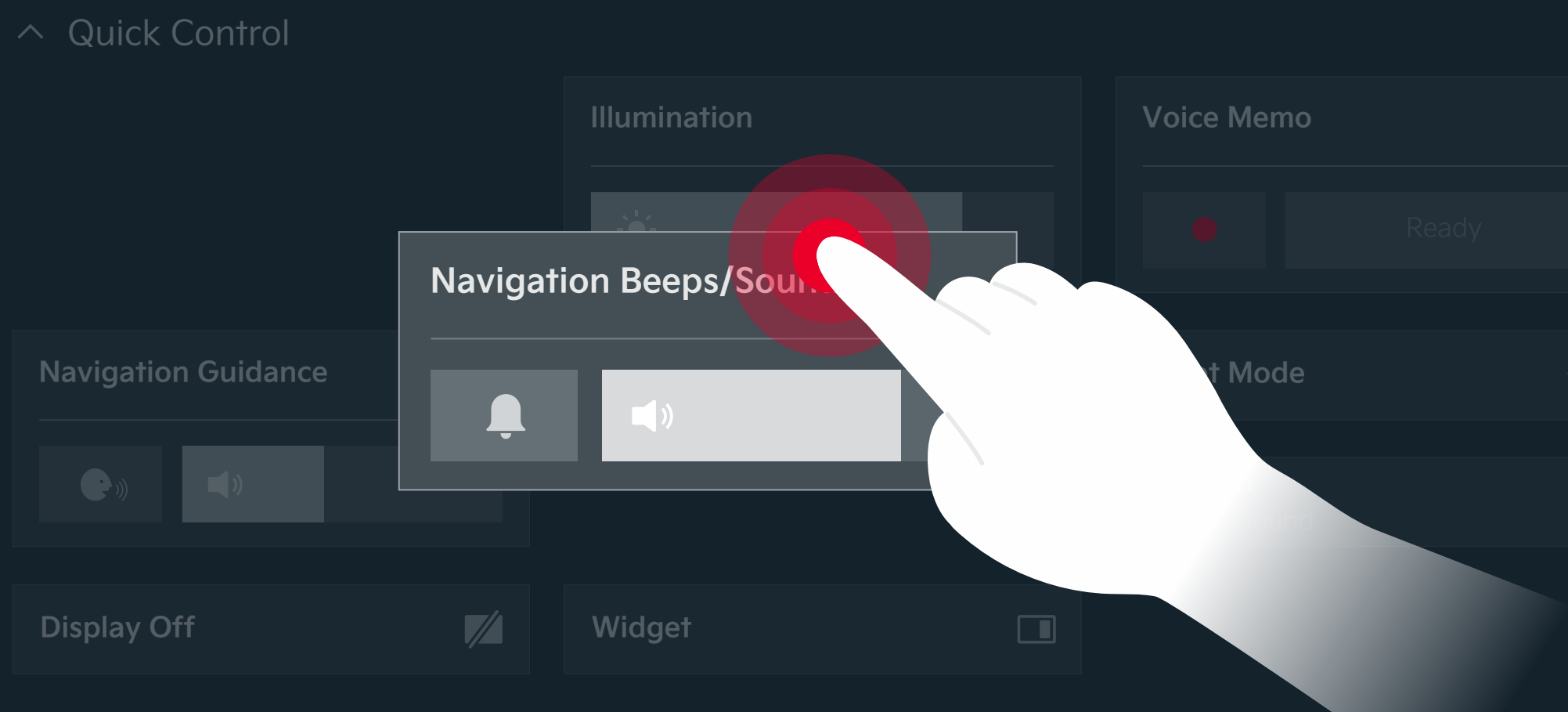


Add and delete features
to customise your own layout.

How To

Touch the icon . Select the features to display on the screen and tap **Done**. To revert to the default display, tap **Reset**.

With easy drag-and-drop, change the Quick Control layout.



Freely arrange icons in your desired layout
for easy access anytime.

How To

Press and hold the icon, then drag it to your desired location.

How is your experience
with Quick Control,
which offers an easy
and convenient environment?

Kia will continue to develop
new technologies for safe driving.

For more information about Kia,
visit **Kia How to**

 **YouTube** @KiaHowTo

The criteria and details may differ depending on the options and specifications of each individual vehicle, and may vary according to regional regulations, driving conditions, the actual condition of the vehicle, and external factors. The company shall not be held legally responsible for any injuries, damage, or other issues resulting from user negligence or improper handling while operating or inspecting the vehicle in accordance with CardNews. For more information, please refer to the owner's manual, and seek professional assistance whenever necessary.